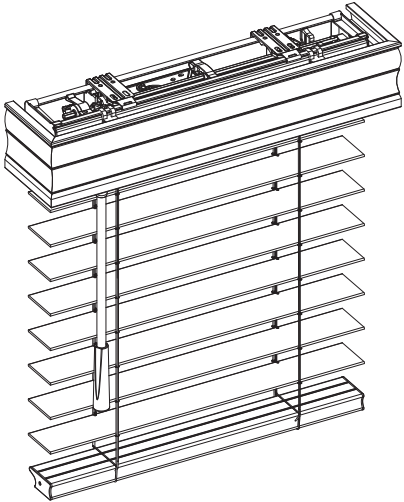


Installation & Maintenance Instructions



Getting Started


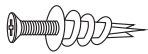

Remove the blind from the package. Be sure to keep the packaging until the blind operates to your satisfaction. Please take a moment to review the following installation guide for proper installation.

Recommended Tools

- Measuring Tape
- Pencil
- Level
- Screwdriver
- Power Drill (1/4" hex driver and drill bit)

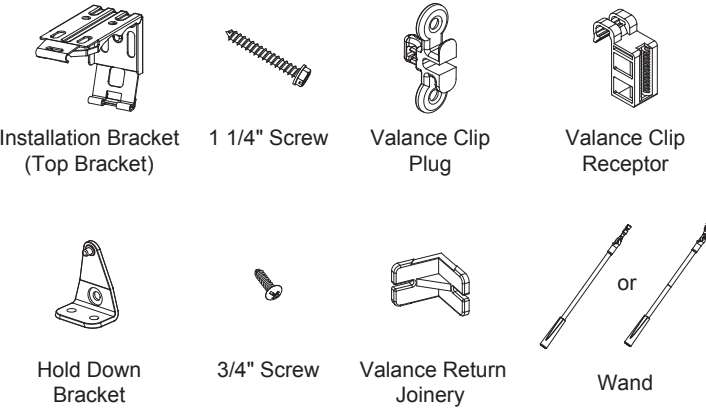


You will need to use the following fasteners for your particular mounting surface.

Mounting Surface	Fastener
Wood	1 1/4" Hexagonal Head Screws (Provided) 
Drywall/ Plaster	Wall Anchors, Expansion Bolts (Not Provided) 
Metal	Sheet Metal Screws (Not Provided) 

Check Component/ Hardware:

Check your package for contents needed for proper installation.



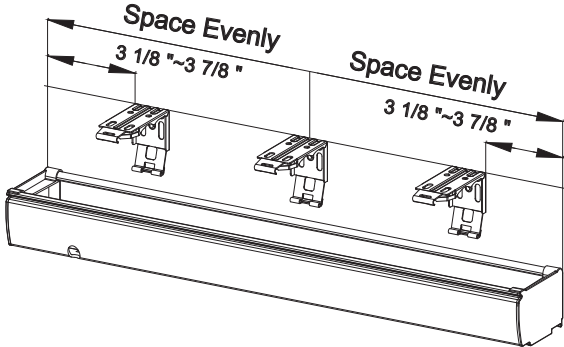
Hardware Standard Quantity

Blind Width (X)	X≤37"	37"<X≤47"	47"<X<60"	60"≤X≤75"	75"<X≤96"
Installation Bracket (Top Bracket)	2	3	4	4	5
1 1/4" Screw for Installation Bracket	4	6	8	8	10
Wand	1				
Valance Clip	2	3	3	4	4
Valance Return Joinery	4				
Hold Down Bracket (if included)	2				
3/4" Screw for Hold Down Bracket	4				

**Note:** You may find more hardware parts than you actually need. In that case, feel free to set them aside for future use.

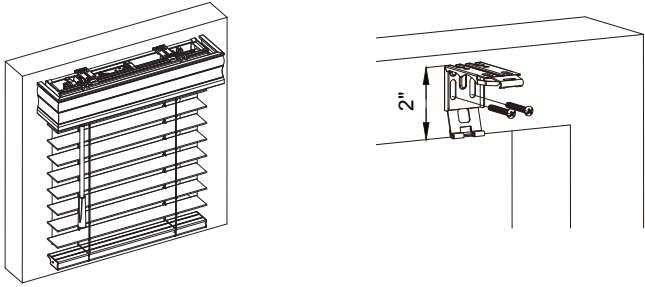
Step 1. Bracket Installation

Mark the bracket location on the mounting surface. For easy installation and proper blind operation, use a level to ensure all brackets are in alignment.



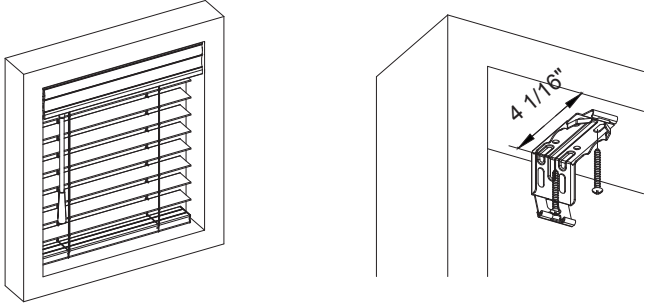
Allocate min. distance from wall face to the backside of the brackets. Use two fasteners (1 1/4" screws or wall anchors) to secure the installation bracket.

Outside Mount



Installation Bracket Location

Inside Mount

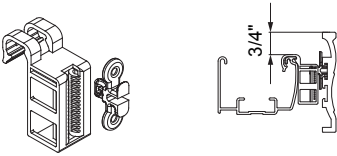


Installation Bracket Location

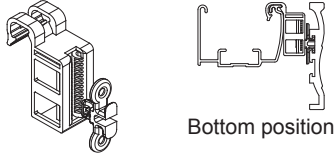
Step 2. Install the Valance Clip

Attach the valance clip plug into the valance clip receptor.

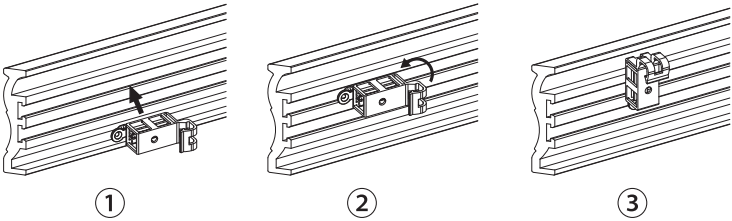
**For Outside Mount**, the plug could be placed at any position. Please note when it is at top position, the height of valance will exceed the head rail by 3/4".



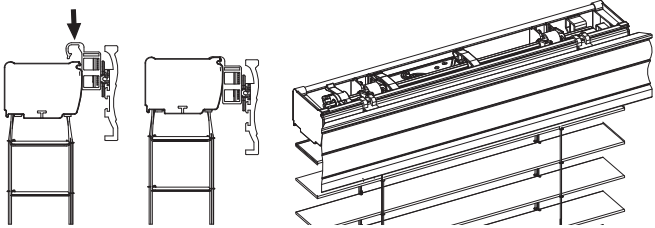
**For Inside Mount and Semi-Inside Mount**, the plug needs to attach to the bottom position.



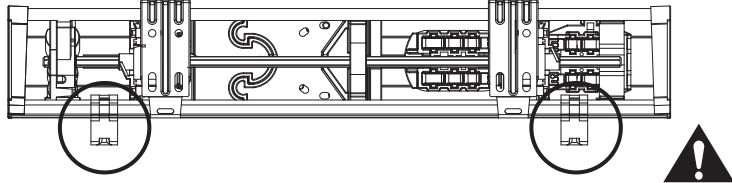
Attach the valance clip plug and valance clip receptor into the channel on the backside of the valance.



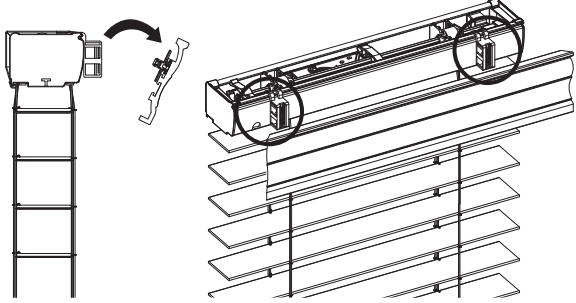
Hook the valance clip receptors onto the head rail and space them evenly.



**Make sure valance clip receptors are not in obstructive position with the drum support or wand tilter inside the head rail and the brackets.**

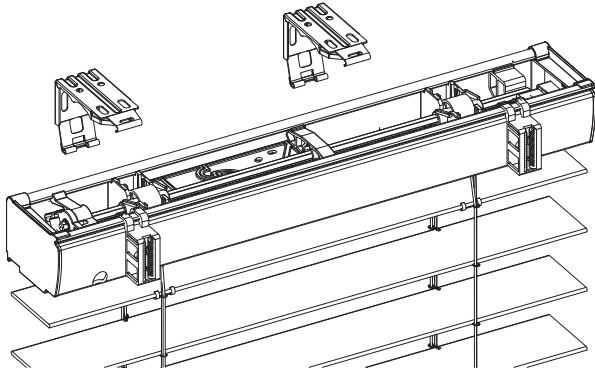


Remove the valance together with valance clip plug away from the valance clip receptors before installing the blind. **Leave the valance clip receptors on the head rail.**



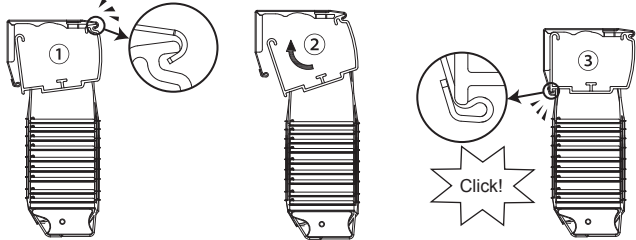
Step 3. Install the Blind

Install the blind as below drawing.

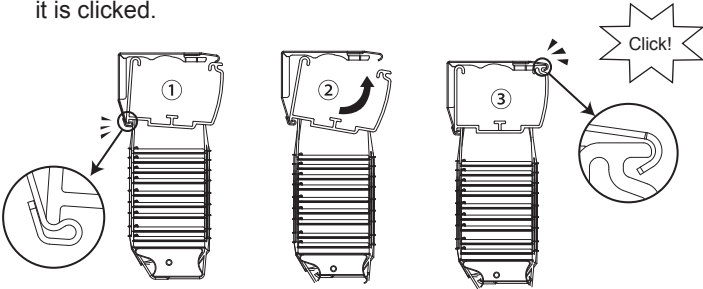


**Then choose one of below ways to attach the head rail to the brackets.**

- Start with attaching the head rail front to the bracket first until it is clicked.

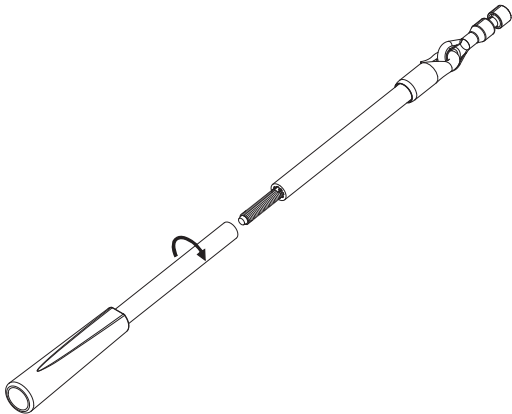


- Start with attaching the head rail back to the bracket first until it is clicked.



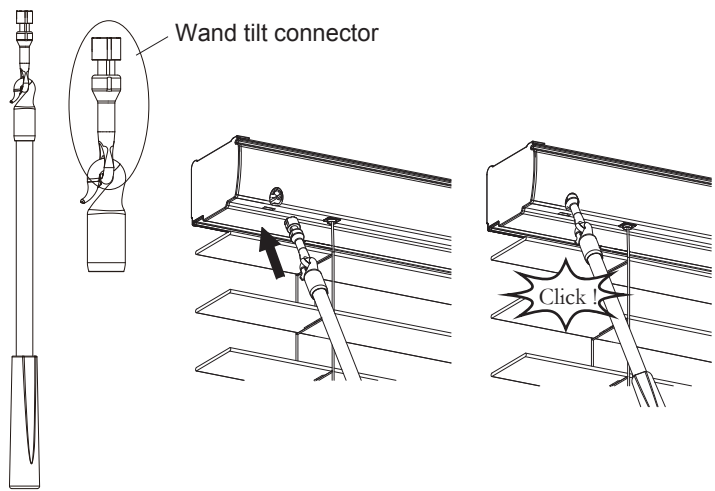
Step 4. Assemble the Split Wand (if needed)

For split wand, screw the wand to the other end (with connector) clockwise until firmly connected.



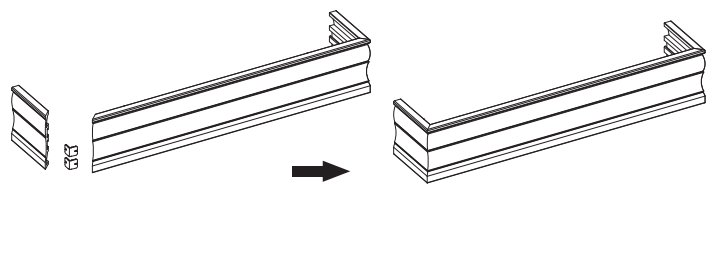
Step 5. Insert the Wand

Insert wand tilt connector into the bottom of head rail until it is clicked. **Please be aware that tilt connector is irremovable from the head rail once installed.**

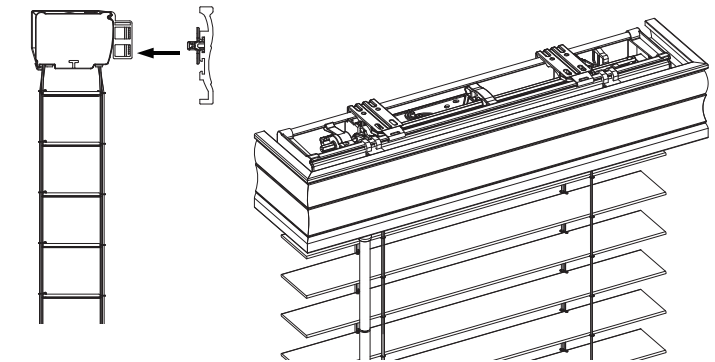


Step 6. Attach the Valance

Insert the valance return joinery if needed. Attach the valance and valance returns as below drawing.



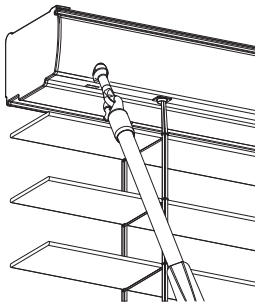
For outside mount, finalize valance installation position first, and then attach the valance to the head rail by inserting the plugs into valance clip receptors as below drawing.



Please refer to step 2 for valance clip plug-in position.

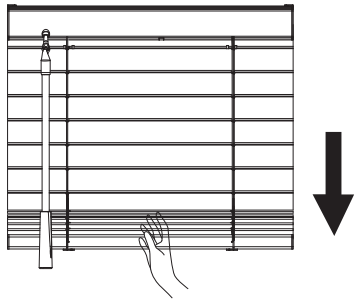
Operate Your Blind

**Tilt wand**  
Rotate wand to attain desired slat position.

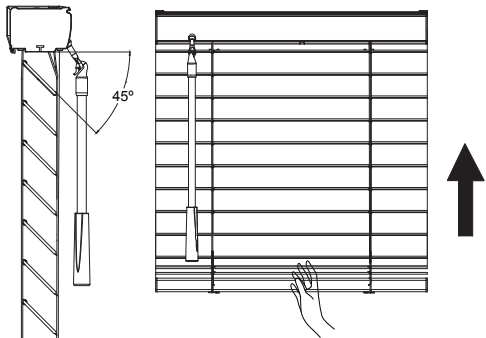


**Raise and Lower the blind**  
Pull and lift the bottom rail by hand.

⚠ Do not fully close the slats while lifting and lowering the bottom rail.



When raising the blind, we recommend that you gently tilt the slats toward you at 45 degree.

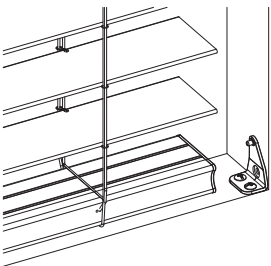


Additional Attachments

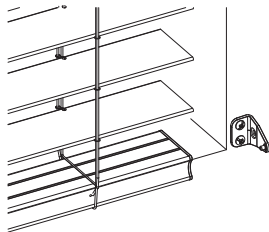
**Hold down brackets** (if included)

Attach the hold down brackets against a flat surface, horizontally or vertically, parallel to the bottom rail. Make sure the protruding area is aligned with the hole on the side of the bottom rail. Secure the hold down bracket into the bottom rail on both sides to keep blinds in desired location.

**Inside Mount**

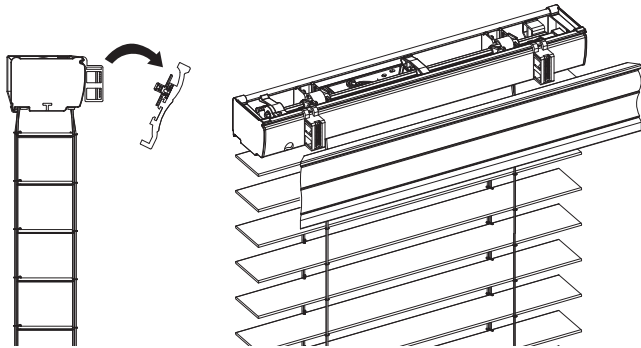


**Outside Mount**



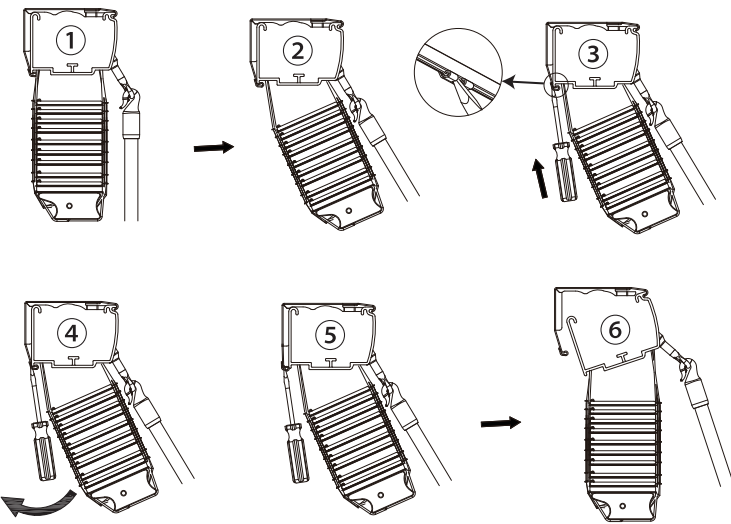
Remove the Blind

Remove the valance and valance clip plug away from the valance clip receptors first.



**Remove the blind from brackets**

To remove blind, detach the blind from brackets as below drawing first.



Cleaning Instructions

Perform periodic simple cleaning of your blind will keep your blind looking its best for the years to come. There are two ways to clean. You can dust it with a duster or dusting mitten, or simply use a soft cloth slightly moisten with lukewarm water to wipe down the slats. You can clean it with the blind hanging on the window, or you can take it down completely. By tilting the slats down but not fully closed, you will be able to clean most of the top surface of each slat. **Do not use detergent or abrasive cleaning solutions to clean the blind since it will likely cause damage to the blind.**