



 **KIRSCH**<sup>®</sup>  
DRAPERY HARDWARE

WOOD TRENDS<sup>™</sup>

R E N E W I N G

# Traditions

Wood Trends™ Collection is built on a foundation of classic forms and a strong heritage of quality that merge together to create a refined blend of everything you've been dreaming of, no matter your style. The clean, natural lines of the Wood Trends™ Collection inspire everyday living with its expertly crafted styles. Get into your comfort zone with our Wood Trends™ Collection.



## CONTENTS

01\ Finials

09\ Endcaps

11\ Holdbacks

13\ Stationary Poles

15\ Estate™ Traverse Rod

17\ Brackets

19\ Rings

21\ Accessories

23\ Finish & Size Index

# FINIALS

## A. ETHAN

White shown.

Available in: 1 $\frac{3}{8}$ ", 2".

Available in all colors.

## B. MILLER

Coffee shown.

Available in: 1 $\frac{3}{8}$ ", 2".

Available in all colors.

## C. WARREN

Estate Oak shown.

Available in: 1 $\frac{3}{8}$ ", 2".

Available in all colors.





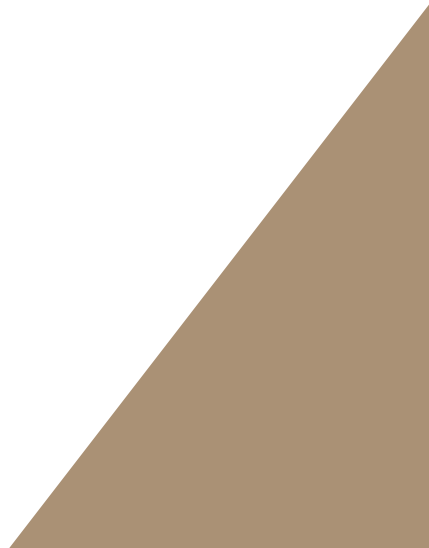
# FINIALS



## HUGO

Black shown. Available in: 1 3/8", 2".  
Available in all colors.

*See page 23 for available colors.*



# FINIALS



- A. WOOD BALL Black shown. Available in: 1½", 2", 3". Available in all colors.
- B. BUTTON BALL Marble shown. Available in: 1½", 2". Available in all colors.
- C. CHAUCER Estate Oak shown. Available in: 1½", 2", 3". Available in all colors.





**SHERWOOD**  
Mahogany shown.  
Available in: 1 3/8", 2".  
Available in all colors.

# FINIALS



CHARLESTON Marble shown. Available in: 1 $\frac{3}{8}$ ", 2", 3". Available in all colors.

BRISTOL Black shown. Available in: 1 $\frac{3}{8}$ ", 2", 3". Available in all colors.

OAKLEAF Coffee shown. Available in: 1 $\frac{3}{8}$ ", 2", 3". Available in all colors.

*See page 23 for available colors.*



# ENDCAPS



## ENDCAP

Estate Oak, Truffle, White shown.

Available in: 1 3/8", 2", 3".

Available in all colors.

*See page 23 for available colors.*



CHAUCER  
Dark Chocolate shown



# HOLDBACKS



## HOLDBACK

Estate Oak, Truffle, Coffee shown.

Available in: 3¾", 4½".

Available in all colors.



CHARLESTON  
Estate Oak shown

# POLES

## A. 1 3/8" FLUTED POLE

Estate Oak shown.

1 3/8" available in; 4', 6', 8', 12'.

Available in all colors.

## B. 2" FLUTED POLE

Black shown.

2" available in; 4', 6', 8', 12'.

3" available in; 6', 8', 12'.

Available in all colors.

## C. 2" SMOOTH POLE

Marble shown.

1 3/8", 2" available in; 4', 6', 8', 12'.

3" available in; 6', 8', 12'.

Available in all colors.

## D. 1 3/8" SMOOTH POLE

Coffee shown.

1 3/8", 2" available in; 4', 6', 8', 12'.

3" available in; 6', 8', 12'.

Available in all colors.





## ESTATE™ T R A V E R S E   R O D S

The Estate™ Rod Collections are the flagship of the Kirsch® Decorative Drapery Hardware product lines. Estate™ rods are decorative traversing drapery rods with heavy duty wheeled carriers that are designed to carry today's heavier draperies. Having set the interior design standard for decades, each Estate™ collection is characterized by historically inspired finials, premium finishes and precision engineered components. Buckingham®, Designer Metals™, Wood Trends™, Chroma and Varia Collections are featured in countless luxury venues and designer homes throughout the world.



ESTATE™ ROD  
WITH SLIDES

Dark Chocolate shown.  
Custom sizes only.  
Available in 1 $\frac{3}{8}$ ", 2".  
Available in all colors.

ESTATE™ ROD  
WITH RIPLEFOLD™

Truffle shown.  
Custom sizes only.  
Available in 1 $\frac{3}{8}$ ", 2".  
Available in all colors.

*See page 23 for available colors.*

# BRACKETS



1⅜" DECORATIVE BRACKET Coffee, 4¼" return shown. Available returns: 4¼". Available in all colors.

1⅝" STANDARD Estate Oak, 3½" return shown. Available returns: 3½" and 6". Available in all colors.

2" DOUBLE BRACKET Truffle Shown, 7" return shown. Available returns: 7". Available in all colors.



2" STANDARD White, 3½" return shown. Available returns: 3½" and 6". Available in all colors.

3" STANDARD Coffee, 4½" return shown. Available returns: 4½" and 6". Available in all colors.

CEILING BRACKET Black Shown. Available in all colors.

*See page 23 for available colors.*

# RINGS

## RINGS WITH REMOVABLE CLIPS

Marble, Black, Truffle, Coffee, Estate Oak shown.

Available in: 1 3/8".

Available in all colors.

## RINGS WITH EYELET

Estate Oak, Mahogany, Black, White shown.

Available in: 2", 3".

Available in all colors.

*See page 23 for available colors.*







# ACCESSORIES



## SWIVEL SOCKET

Estate Oak shown. Available in: 1½", 2", 3".  
Available in all colors.



## INSIDE MOUNT SOCKET

Mahogany shown. Available in: 1½".  
Available in all colors.







CHAUCER  
Estate Oak shown

# INDEX



Black



Coffee



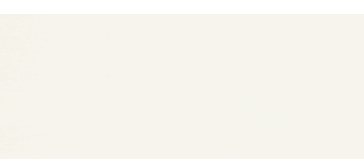
Dark Chocolate



Estate Oak



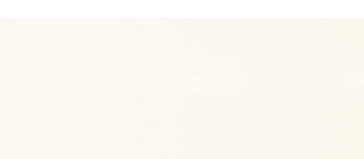
Mahogany



Marble



Truffle



White



Unfinished

## Measurement Guide

### Bristol



A (depth)	B (height)	C (width)
1 3/8"	3 1/2"	2 1/2"
2"	4 3/4"	3 1/2"
3"	7"	5 1/8"

Available in all colors.  
Use guide below for size reference.

### Button Ball



A (depth)	B (height)	C (width)
1 3/8"	3 1/2"	2 1/2"
2"	4 5/8"	3 1/2"
3"	-	-

Available in all colors.  
Use guide below for size reference.

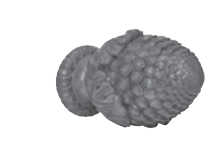
### Chaucer



A (depth)	B (height)	C (width)
1 3/8"	3 3/4"	3 1/4"
2"	4 3/8"	3 3/4"
3"	6 1/8"	5"

Available in all colors.  
Use guide below for size reference.

### Oakleaf



A (depth)	B (height)	C (width)
1 3/8"	4 1/2"	2 1/2"
2"	5 1/4"	3 3/4"
3"	7 1/2"	4 3/4"

Available in all colors.  
Use guide below for size reference.

### Sherwood



A (depth)	B (height)	C (width)
1 3/8"	3 3/4"	2 3/4"
2"	5"	3"
3"	-	-

Available in all colors.  
Use guide below for size reference.

### Warren



A (depth)	B (height)	C (width)
1 3/8"	1 1/4"	2 1/2"
2"	1 7/8"	3 3/4"
3"	-	-

Available in all colors.  
Use guide below for size reference.

### Fluted Ring



A (internal)	B (external)	C (B to eyelet)
1 3/8"	-	-
2"	2 3/8"	4 1/4"
3"	3 3/8"	5 3/8"

Available in all colors.  
Use guide below for size reference.

### Bracket

3 1/2" Return



A (depth)	B (height)	C (width)	D
1 3/8"	5 1/2"	3 1/2"	1"
2"	5 5/8"	4 3/4"	1"
3"	-	-	-

Available in all colors.  
Use guide below for size reference.

### Bracket

4 1/4" Return



A (depth)	B (height)	C (width)	D
1 3/8"	5 1/2"	2 3/8"	1 3/8"
2"	-	-	-
3"	-	-	-

Available in all colors.  
Use guide below for size reference.

### Inside Mount Socket



A (depth)	B (height)	C (width)
1 3/8"	1 9/32"	1 13/16"
2"	-	-
3"	-	-

Available in all colors.  
Use guide below for size reference.

### Swivel Socket



A (to center)	B (height)	C (full length)
1 3/8"	2 3/8"	3 3/16"
2"	3 5/8"	4 7/8"
3"	5 1/4"	7"

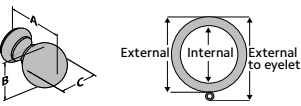
Available in all colors.  
Use guide below for size reference.

### Holdback Medallion



A (depth)	B (height)	C (width)
3 3/4"	3 3/4"	5 1/2"-7 1/2"
4 1/2"	4 1/2"	5 1/2"-7 1/2"

Available in all colors.  
Use guide below for size reference.



Use the measurement guide to the left to help determine the correct dimensions for each product.

## Charleston



	A (depth)	B (height)	C (width)
1½"	4½"	3¾"	3¾"
2"	5¾"	4¼"	4¼"
3"	7¾"	5¾"	5¾"

Available in all colors.  
Use guide below for size reference.

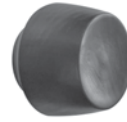
## Ethan



	A (depth)	B (height)	C (width)
1½"	2¾"	3¼"	3¼"
2"	4"	4¾"	4¾"
3"	-	-	-

Available in all colors.  
Use guide below for size reference.

## Hugo



	A (depth)	B (height)	C (width)
1½"	2"	2½"	2½"
2"	2⅞"	3¾"	3¾"
3"	-	-	-

Available in all colors.  
Use guide below for size reference.

## Miller



	A (depth)	B (height)	C (width)
1½"	2¾"	3"	3"
2"	3½"	4½"	4½"
3"	-	-	-

Available in all colors.  
Use guide below for size reference.

## Wood Ball



	A (depth)	B (height)	C (width)
1½"	3½"	2½"	2½"
2"	5¼"	3¾"	3¾"
3"	6½"	4¼"	4¼"

Available in all colors.  
Use guide below for size reference.

## Endcap



	A (depth)	B (height)	C (width)
1½"	¾"	2"	2"
2"	1⅞"	3"	3"
3"	1⅞"	4"	4"

Available in all colors.  
Use guide below for size reference.

## Ring



	A (internal)	B (external)	C (B to eyelet)
1½"	1⅞"	2⅞"	3¼"
2"	-	-	-
3"	-	-	-

Available in all colors.  
Use guide below for size reference.

## Bracket

4½" Return



	A (depth)	B (height)	C (width)	D
1½"	-	-	-	-
2"	-	-	-	-
3"	7¾"	4⅞"	1⅞"	3"

Available in all colors.  
Use guide below for size reference.

## Bracket

6" Return



	A (depth)	B (height)	C (width)	D
1½"	7⅞"	4"	7⅞"	5¼"
2"	8"	4¾"	1"	5"
3"	8⅞"	4⅞"	1⅞"	4½"

Available in all colors.  
Use guide below for size reference.

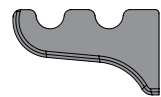
## Ceiling Bracket



	A (depth)	B (height)	C (width)	D
1½"	4¾"	4"	5"	2⅞"
2"	6"	5⅞"	6"	2⅞"
3"	-	-	-	-

Available in all colors.  
Use guide below for size reference.

## Double Bracket



	A (depth)	B (height)	C (width)	D	E	F
1½"	8"	4¾"	1"	2"	2¾"	6"
2"	9"	4¾"	1"	2⅞"	3"	7"
3"	-	-	-	-	-	-

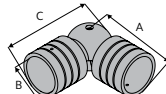
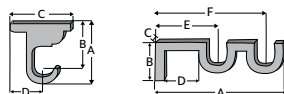
Available in all colors.  
Use guide below for size reference.

## Utility Bracket



	A (depth)	B (height)	C (width)	D	E	F
1½"	5¼"	3¾"	7⅞"	1½"	1¾"	3½"
2"	8"	4¾"	7⅞"	2¼"	2⅞"	6"
3"	-	-	-	-	-	-

Available in all colors.  
Use guide below for size reference.



Use the measurement guide to the left to help determine the correct dimensions for each product.



BUCKINGHAM®  
redefining luxury

DESIGNER METALS™  
inspiring brilliance

WOOD TRENDS™  
renewing traditions

WROUGHT IRON  
forging artistry

RENAISSANCE™  
awakening perfection

ARCHITRAC®  
practical precision

ESTATE™  
innovating comfort