

Coronado™

Natural Woven Shades

Motorization Quick Set Up

AUTOMATE™

Fifteen Channel Remote with LCD display

FEATURES INCLUDE:

- Touch sensitive buttons
- Leveling control
- Ability to hide unused channels
- Slim Magnetic Wall Mount
- Uses ARC (AUTOMATE™ Radio Communication)

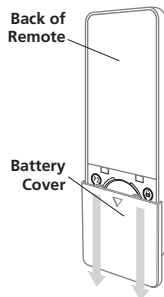


— **Coronado Motorized Shades Will Come Preprogrammed to the Channel Specified When Ordered —**
Each Motor Needs to Be Fully Charged After Installation.

About Coronado Remote Control

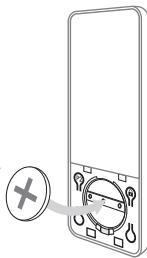
Initialize Battery on Remote

Remove Plastic Tab on Battery. Or if necessary, install Battery. LCD Display will show channel number if battery is installed properly.



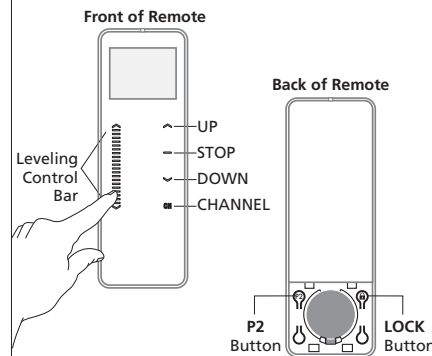
On back of Remote, gently press down on Battery cover to expose Battery Compartment.

3V Battery (CR2450)

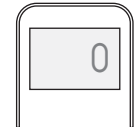


Install Battery if necessary with positive (+) side facing up. Avoid pressing P2 or LOCK buttons.

Buttons and Controls



Channel "0"



CHANNEL "0" is pre-set to control ALL shades paired within your multi-channel Remote Control in addition to the channel or channels that were specified when ordered.

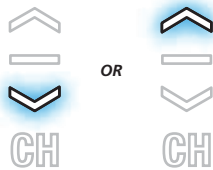
Selecting a Channel

Press CH Button.



Response
LCD screen will begin to flash

Within 4 seconds press **DOWN** (∨) or **UP** (∧) to select desired channel.



IMPORTANT

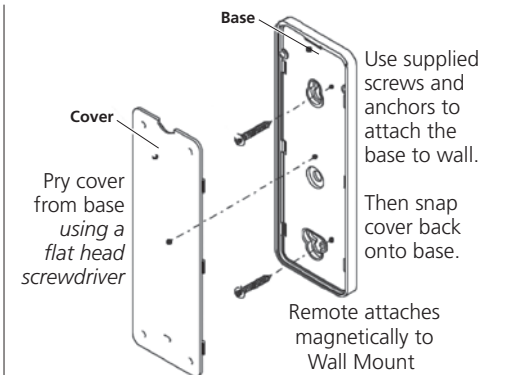
If no button is pressed within 4 seconds, the channel selection will automatically be confirmed.

Press CH or STOP (≡)



Selection is Confirmed

Optional Wall Mount for Remote



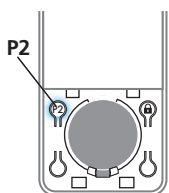
Set a Favorite Position

Step 1 - Move Shade to the Desired Position

Press the **UP** or **DOWN** button on the Remote to move shade to desired position.

1a

Press **P2** on Back of Remote.



Wait for Motor Response



1b

Press **STOP** (≡) on Front of Remote



Motor Response

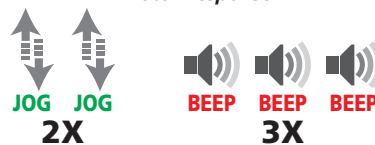


1c

Press **STOP** (≡) on Front of Remote **AGAIN**



Motor Response



Step 2 - Send Shade to Favorite Position

Press and hold **STOP** (≡) button on the Remote for approximately 2 seconds.



To Delete a Favorite Position

Repeat Steps 1a, 1b, and 1c.

Motor Response



Add/Copy a Channel (Use this same procedure to delete a channel or group or add a new remote)

Step 1 - Copy Channel Information

On front of Remote, scroll to Channel you wish to copy (example shown - Channel 1)

Flip Remote over. Press **P2**.

Press **P2** again.

Wait for Motor Response

Wait for Motor Response

BEEP 1X **JOG 1X**

BEEP 1X **JOG 1X**

Step 2 - Apply information to New Channel

Turn Remote back over, scroll to a new Channel (example shown - Channel 2)

Flip Remote over again. Press **P2** to apply commands to new Channel.

Motor Response

BEEP 3X **JOG 2X**

Hiding Unused Channels

Setting the remote to display only the channels assigned to task will make it easier to scroll between the channels you are using.

In This Example, only channels 1 - 6 are being used, so channels 7 - 15 will be hidden.

1 To select channel range 1 - 6 only to display, press **CH** and **STOP** simultaneously. Channel 15 will Flash

2 Continue to hold **CH** while tapping **UP** or **DOWN** to scroll to the highest number channel you want to display. In this example Channel 6.

3 Continue to hold **CH** while holding **STOP** until Channel 6 quits flashing.

In this example, range of channels is set to channels 1 - 6.

Lock Remote Control Settings

Lock Remote Control after all programming has been completed. This will prevent accidental or unintended changes to settings.

To switch from Programming Mode to Locked Mode, press Lock () button for 5 seconds.

Response

LCD Displays "L" for Locked or LCD Displays "U" for Locked

TROUBLESHOOTING

Pairing Remote Control to Shade Motor

Motor Will be Programmed at Factory. However, if motor is not responding, pairing the Remote to the Motor may be necessary.

Step 1 - Hold P1 Button on Motor Head

Step 2 - Pairing Coronado Remote Control to Motor

Approximately 2 SECONDS

Hold STOP () Button on Remote to add or remove

Approximately 2 SECONDS

Motor Response

Motor Response

BEEP 1X **JOG 1X**

BEEP 3X **JOG 2X**

Check That Remote Control Protocol is Set to ARC "1"

The Coronado multi-channel remote control should arrive configured for the default ARC Protocol. If for some reason the Remote Control is not responding to programming procedures, check to make sure it is configured properly to ARC Protocol.

Hold **P2** while inserting battery.

Screen Flashes "1" for ARC Protocol

Screen Flashes "2" for EL Protocol

ARC is the proper protocol for Coronado Shades

WARNING: Do not use EL Protocol

WARNING

After all programming has been completed, use the small screw and screwdriver provided to secure the Battery Cover and make the battery inaccessible to small children.

Also, if replacing a battery, properly dispose of old battery to prevent child safety hazard.

